



# LIQUIDOW Calcium Chloride

## General Description

LIQUIDOW\* calcium chloride is a liquid solution form of calcium chloride. It is available in concentrations ranging from 28–42% calcium chloride, as well as 45% calcium chloride. LIQUIDOW calcium chloride meets ASTM D 98-93 and AASHTO M144-86 (1993) requirements for calcium chloride purity. ASTM classification for LIQUIDOW calcium chloride is "Type L."

## Applications

LIQUIDOW calcium chloride is primarily used for dust control of unpaved roads and parking lots, and prewetting rock salt deicers

LIQUIDOW calcium chloride also has a large number of other uses. Uses are generally industrial in nature, and include concrete acceleration, tire weighting, brine refrigeration systems, waste water treatment, and as a calcium source for chemical processing.

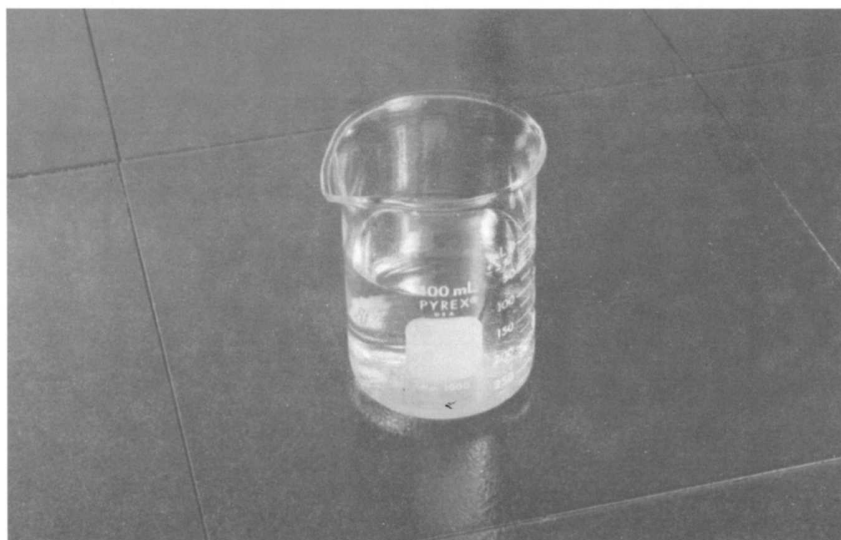
Typical solution properties of LIQUIDOW calcium chloride are found in Table 1 on the following sheet.

## Physical Properties

Appearance	Colorless to pale yellow liquid at temperatures above the crystallization point.
Odor	None
Bulk Density	10.60 to 11.96 & 12.25 lbs./gal. depending upon % CaCl <sub>2</sub> .

## Availability

LIQUIDOW calcium chloride is available in bulk tank truck, rail car, and barges.



## Chemical Properties

Item	Limit	Unit
Calcium Chloride	28–42 & 45	%
Total Alkali Salts (as NaCl), max.	1.68–2.52 & 2.7	%
Total Magnesium (as MgCl <sub>2</sub> ), max.	0.15–0.23 & 0.25	%

## Safety and Handling

For brief contact, no precautions other than clean body-covering clothing should be needed. Selection of specific items such as goggles, gloves, and apron will depend on the operation. Eye/face protection is recommended for dusty operations or when handling solutions.

Appropriate ventilation should be in place to keep atmospheric levels below industrial hygiene guidelines (Dow IHG for calcium chloride is 10 mg/cu. meter).

Rubber boots and gloves are recommended, due to the adverse effect of calcium chloride on leather.

Consult authorities for proper disposal information.

**For full safety and handling details, contact The Dow Chemical Company for a current copy of the Material Safety Data Sheet for this product.**

For more information contact The Dow Chemical Company Customer Information Center at 1-800-447-4369.

\*Trademark of The Dow Chemical Company